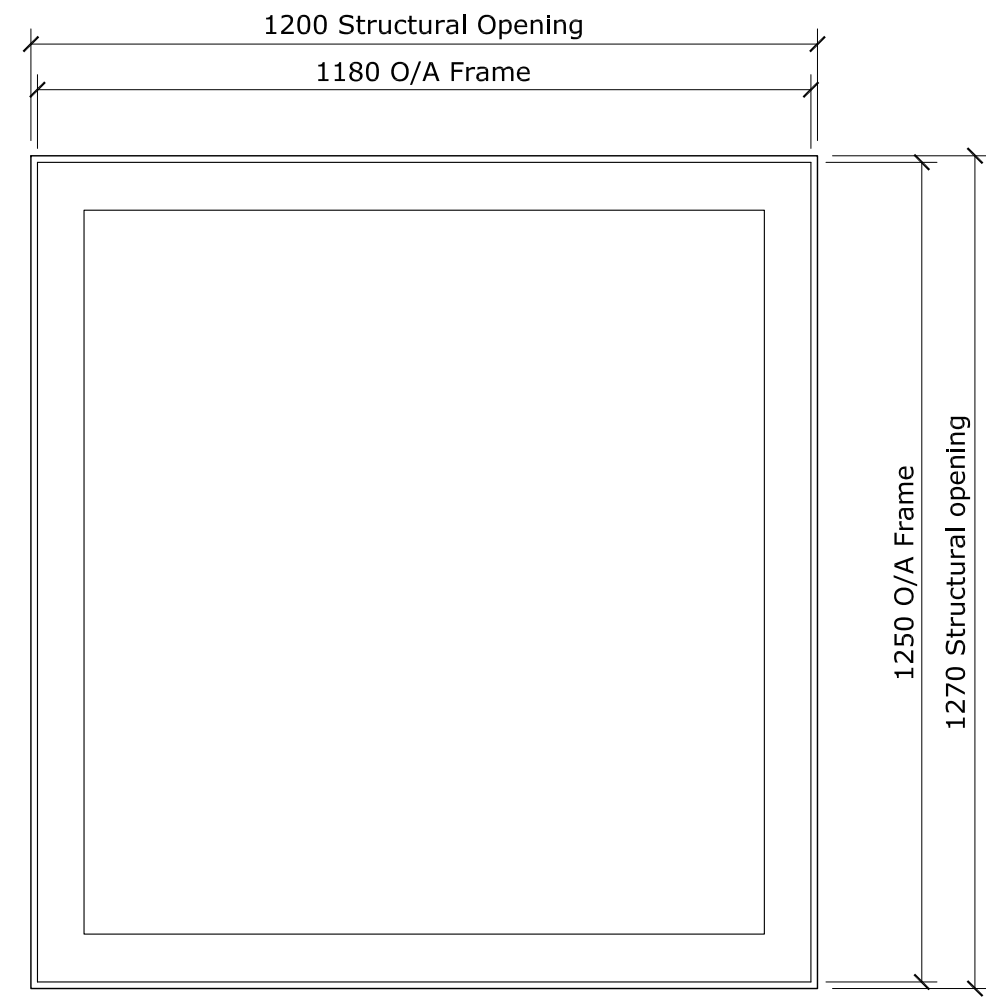
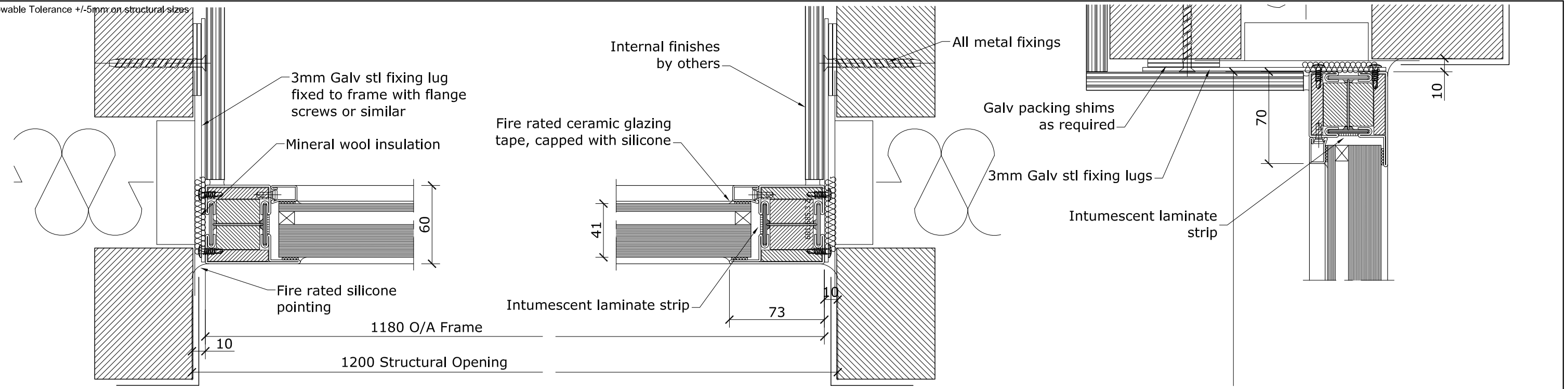
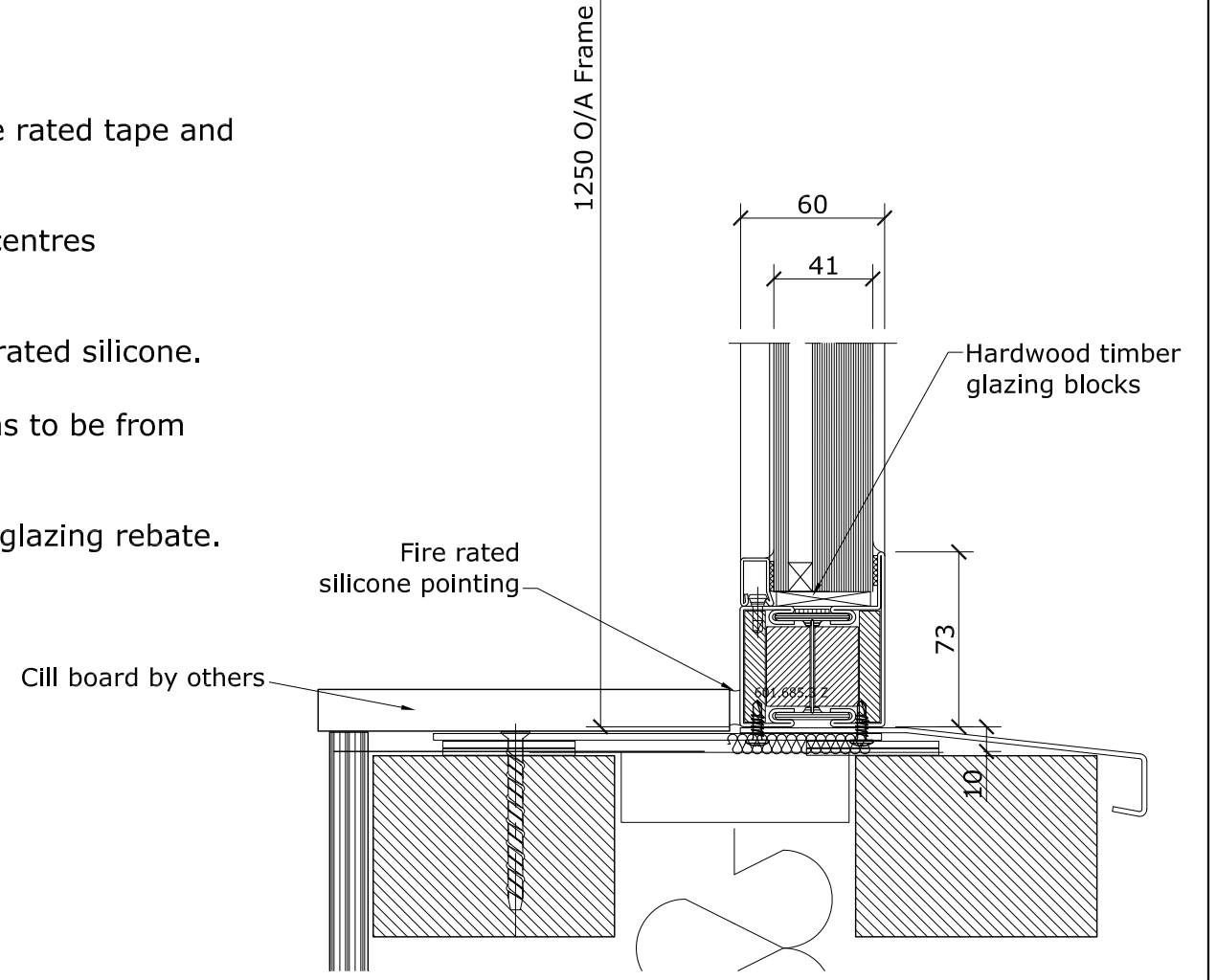


Allowable Tolerance +/-5mm on structural sizes



Notes

- Glazing to be performed with fire rated tape and silicone capped.
- Windows to be fixed at 400mm centres maximum, with all metal fixings.
- Windows to be pointed with fire rated silicone.
- Where required, all packing shims to be from galvanised stl.
- Intumescent strip to be fitted to glazing rebate.



architectural products limited
 specialised aluminium fabrications for the construction industry
 Unit 9, Alexandra Way, Tewkesbury, Gloucestershire GL20 8NB
 Tel: 01684 291555 Fax: 01684 291666
 www.architecturalproducts.co.uk

Project:			
Client:			
Revisions	Date	By	

Specification: 60 mins Integrity and Insulation
 Glass:
 Finish:

Title: FIRE RATED SCREEN DETAILS EI60		
Scale: NTS	Date: 10.09.09	Drawing No.
Drawn: IJO	Checked:	